

Road Allowance

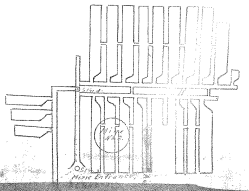
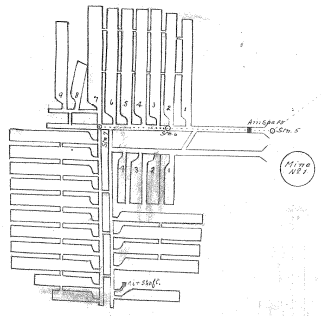
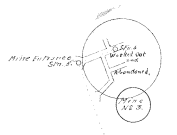
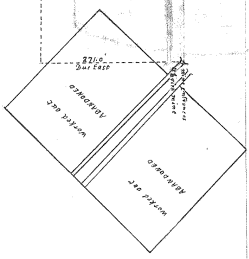
1186
 Mineral Rights on the N.E. & S.E. of Sec. 22 - 14-40N-22E 3rd Township
 in the name of John Mitchell of E. Van. Sask.
 Mining Operations are conducted by persons whose names
 are shown in connection with the different Survey Locations.
 Scale 1 inch = 100 feet
 (A. L. L. & Co.)



M1 Mine operated by H. Deane Surveyed Sept. 27th 1920				M2 Mine operated by R. Adams Sept 27th 1920				M3 Mine operated by S. Stymon Sept 27th 1920			
Station	Bearing	Distance	Remarks	Station	Bearing	Distance	Remarks	Station	Bearing	Distance	Remarks
1	S 75° E	100	Corner of Sec 22-14-40N-22E	1	S 75° E	100	Corner of Sec 22-14-40N-22E	1	S 75° E	100	Corner of Sec 22-14-40N-22E
2	S 75° E	100	Corner of Sec 22-14-40N-22E	2	S 75° E	100	Corner of Sec 22-14-40N-22E	2	S 75° E	100	Corner of Sec 22-14-40N-22E
3	S 75° E	100	Corner of Sec 22-14-40N-22E	3	S 75° E	100	Corner of Sec 22-14-40N-22E	3	S 75° E	100	Corner of Sec 22-14-40N-22E
4	S 75° E	100	Corner of Sec 22-14-40N-22E	4	S 75° E	100	Corner of Sec 22-14-40N-22E	4	S 75° E	100	Corner of Sec 22-14-40N-22E
5	S 75° E	100	Corner of Sec 22-14-40N-22E	5	S 75° E	100	Corner of Sec 22-14-40N-22E	5	S 75° E	100	Corner of Sec 22-14-40N-22E
6	S 75° E	100	Corner of Sec 22-14-40N-22E	6	S 75° E	100	Corner of Sec 22-14-40N-22E	6	S 75° E	100	Corner of Sec 22-14-40N-22E

NO. 44

LS 10 LS 11
 LS 12 LS 13



MITCHELL MINE